

FEKO Model Parameters

Antenna length = 69 mm (2.71 in)

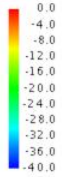
Antenna diameter = 4 mm (0.16 in)

Square ground plane dimensions = 120, 240, & 700 mm (4.72, 9.45, & 27.56 in)

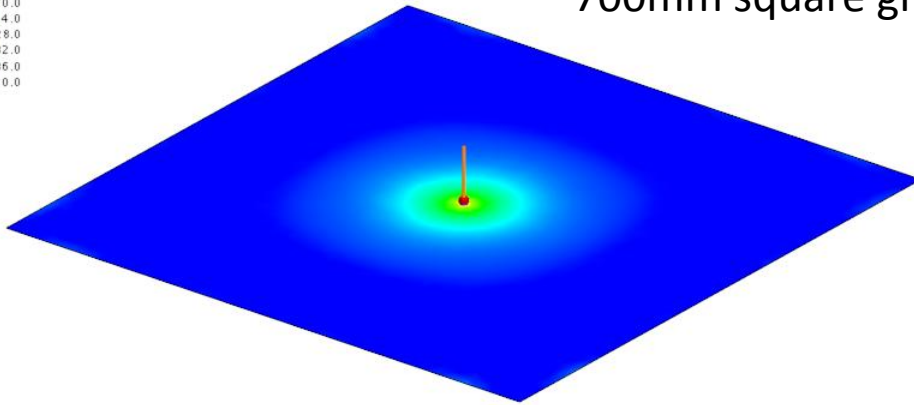
Circular ground plane diameters = 120, 240, & 700 mm (4.72, 9.45, & 27.56 in)

RF Currents at 1060 MHz

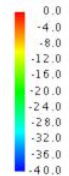
Surface current [dB A/m]



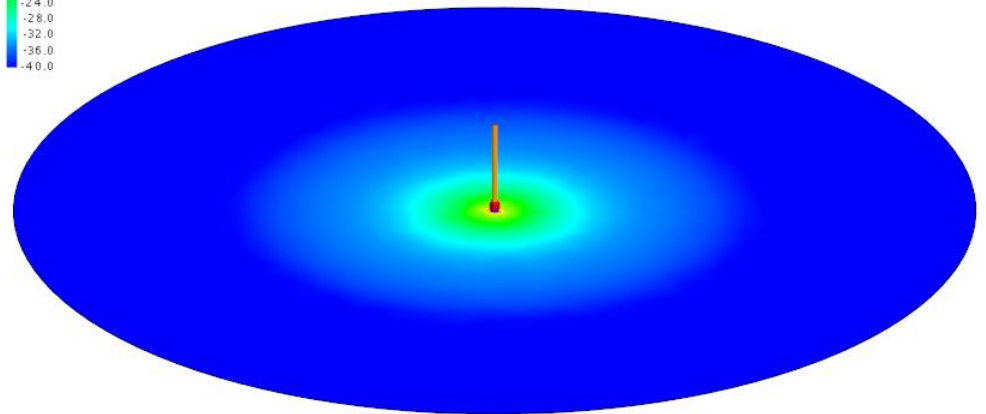
700mm square ground plane



Surface current [dB A/m]

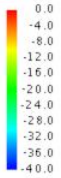


700mm diameter ground plane

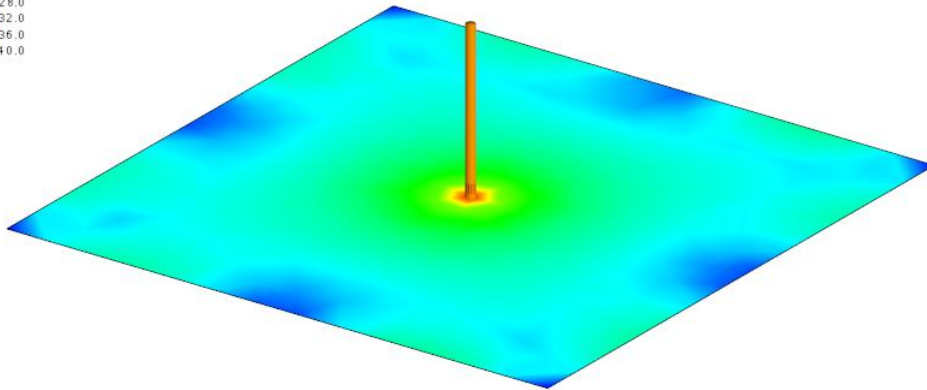


RF Currents at 1060 MHz

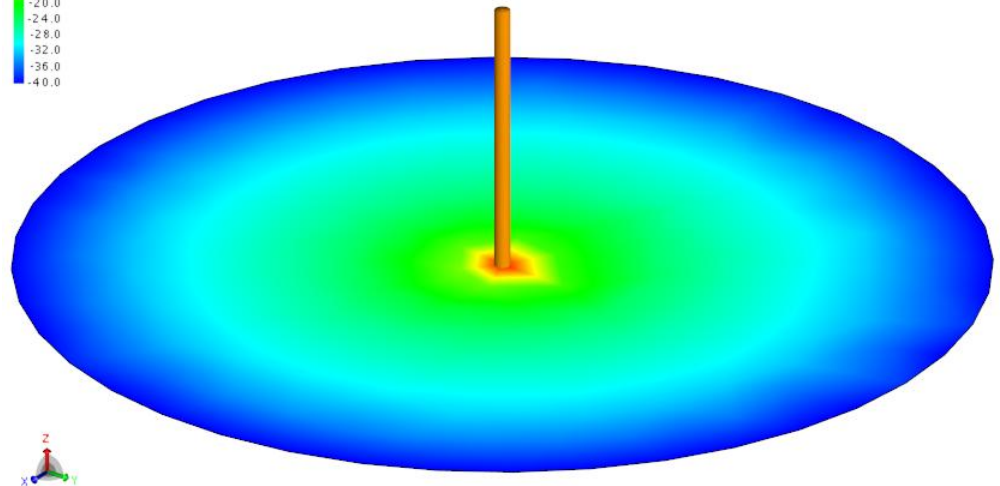
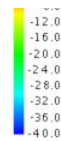
Surface current [dBA/m]



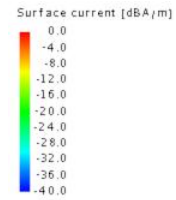
240mm square ground plane



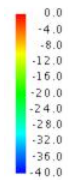
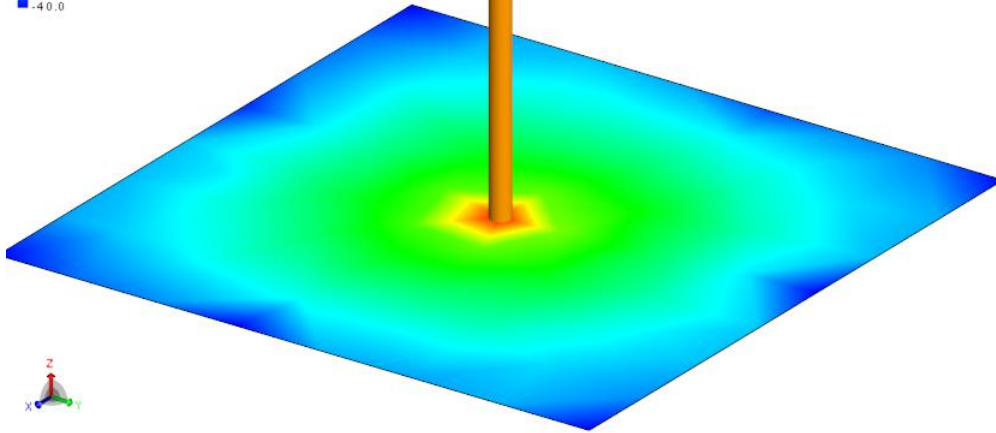
240mm diameter ground plane



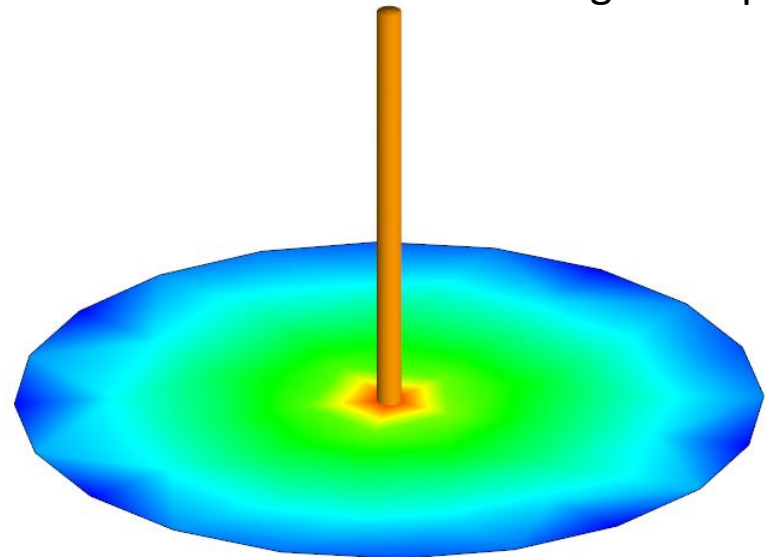
RF Currents at 1060 MHz



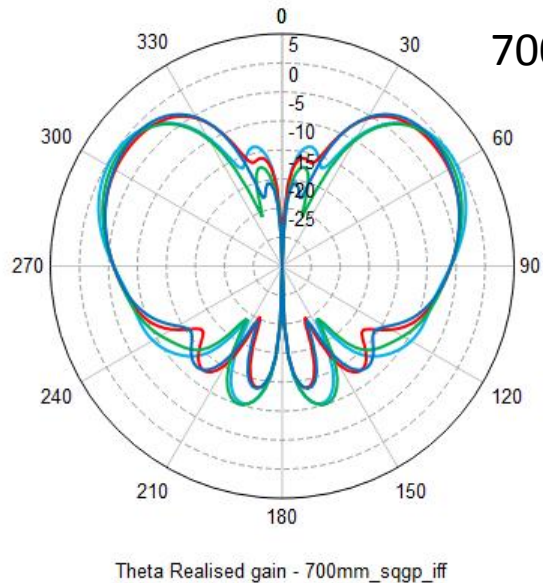
120mm square ground plane



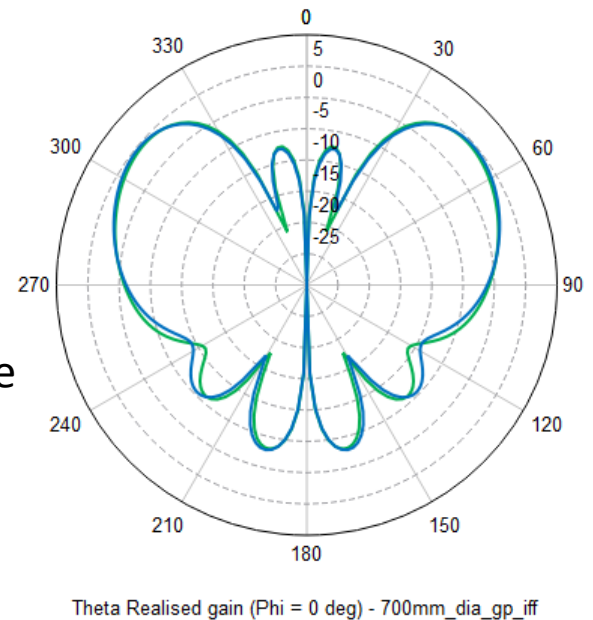
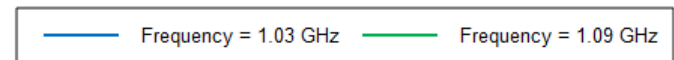
120mm diameter ground plane



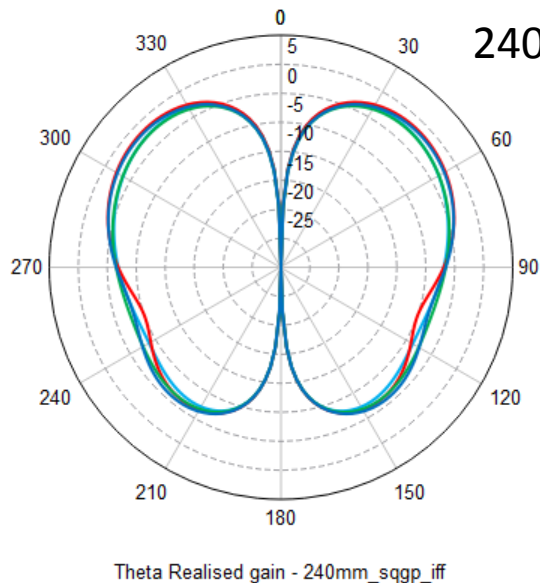
Radiation Patterns at 1030 and 1090 MHz



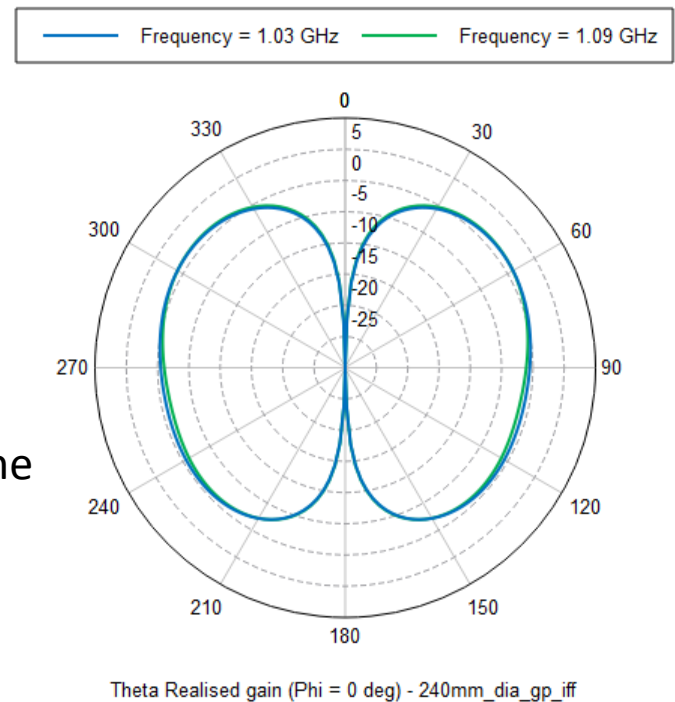
700mm diameter ground plane



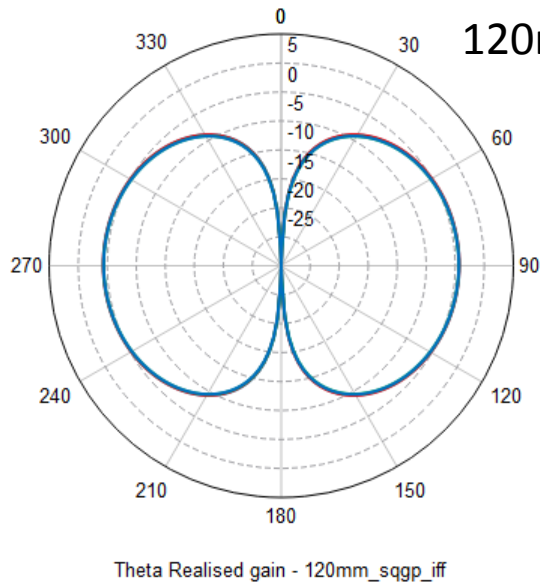
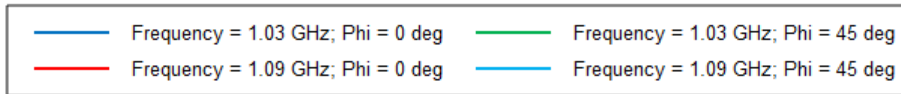
Radiation Patterns at 1030 and 1090 MHz



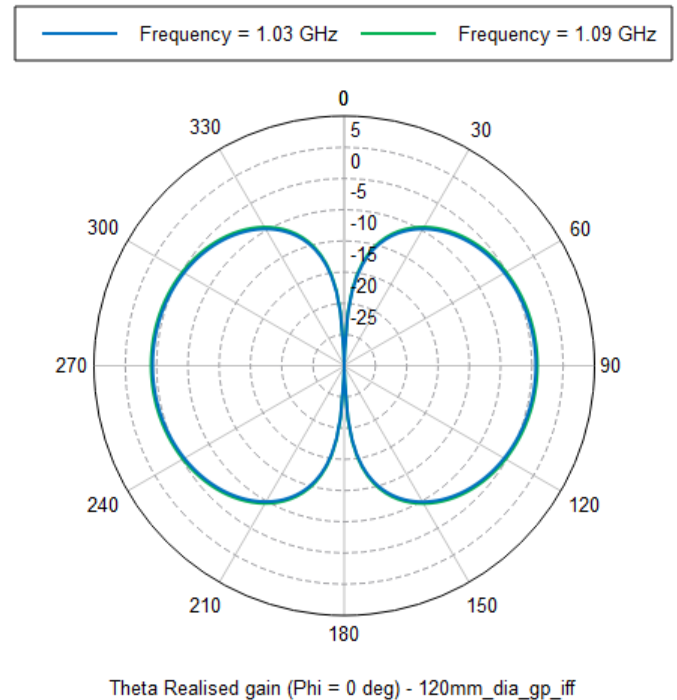
240mm diameter ground plane



Radiation Patterns at 1030 and 1090 MHz

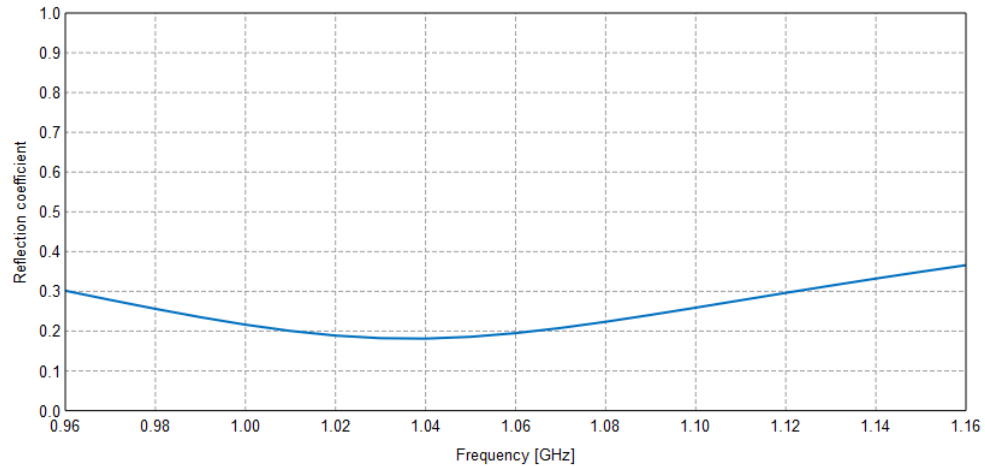


120mm diameter ground plane



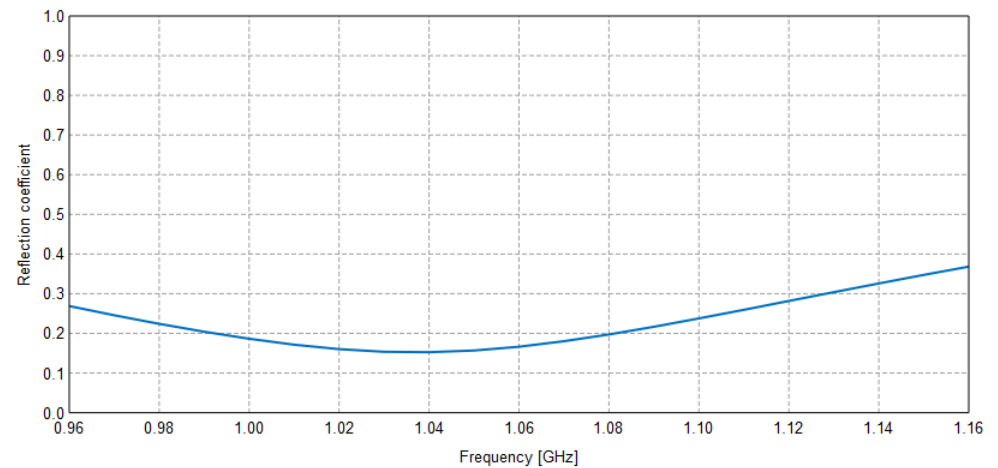
Antenna Reflection Coefficient

700mm square ground plane



Reflection coefficient Magnitude - 700mm_sqgp_if

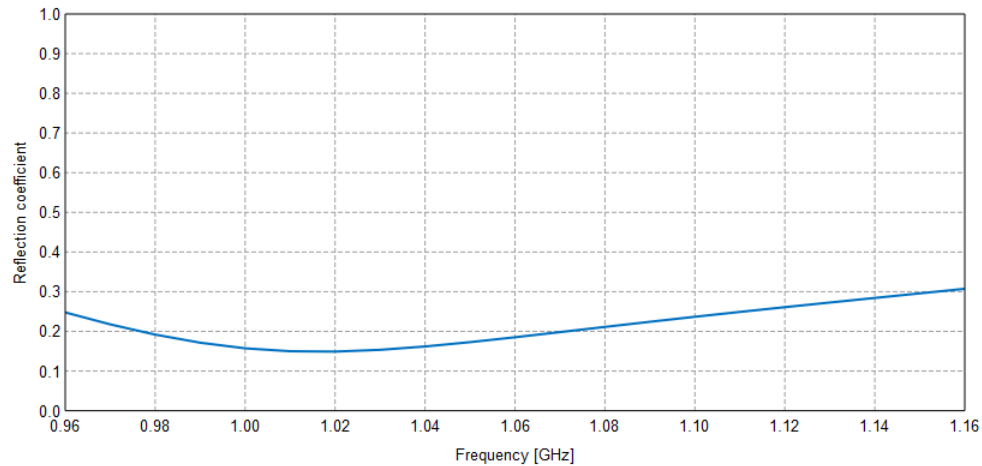
700mm diameter ground plane



Reflection coefficient Magnitude - 700mm_dia_gp_if

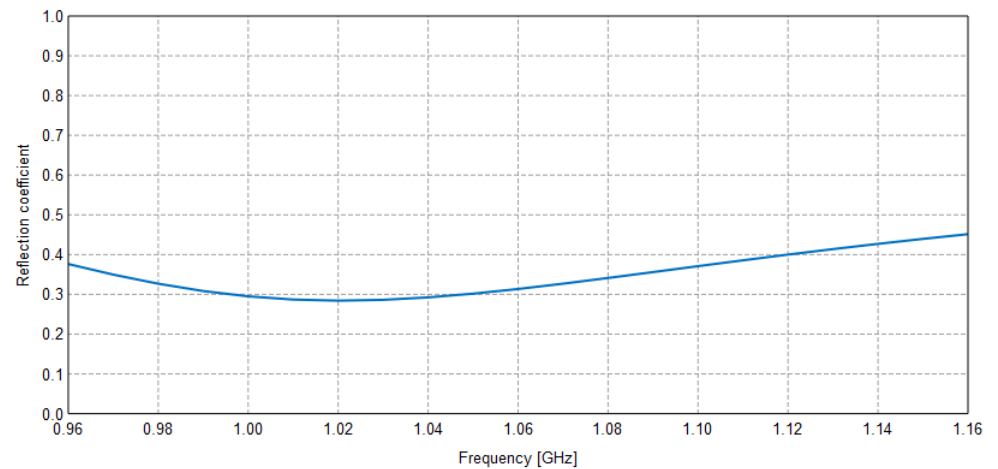
Antenna Reflection Coefficient

240mm square ground plane



Reflection coefficient Magnitude - 240mm_sqgp_iff

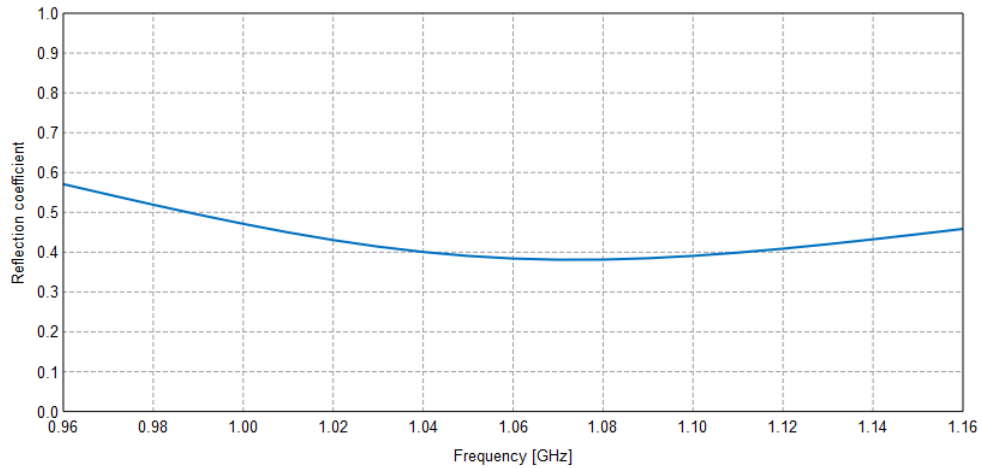
240mm diameter ground plane



Reflection coefficient Magnitude - 240mm_dia_gp_iff

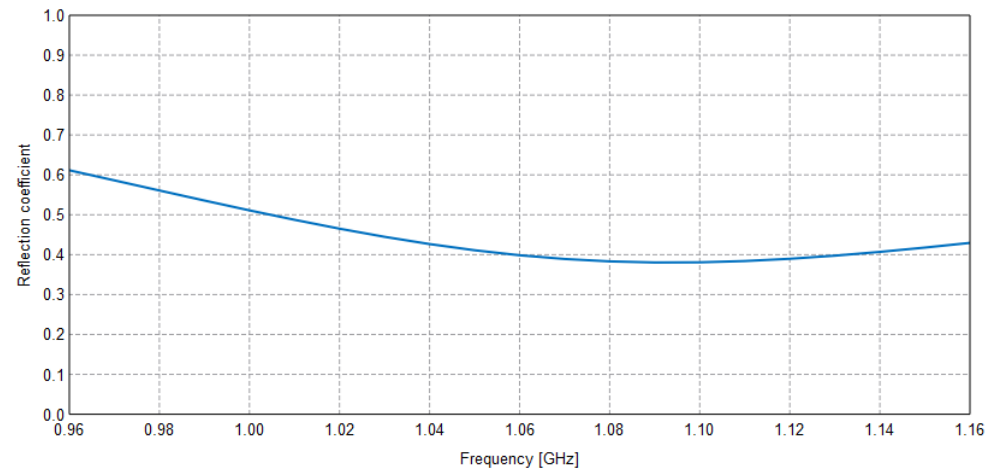
Antenna Reflection Coefficient

120mm square ground plane



Reflection coefficient Magnitude - 120mm_sqgp_iff

120mm diameter ground plane



Reflection coefficient Magnitude - 120mm_dia_gp_iff