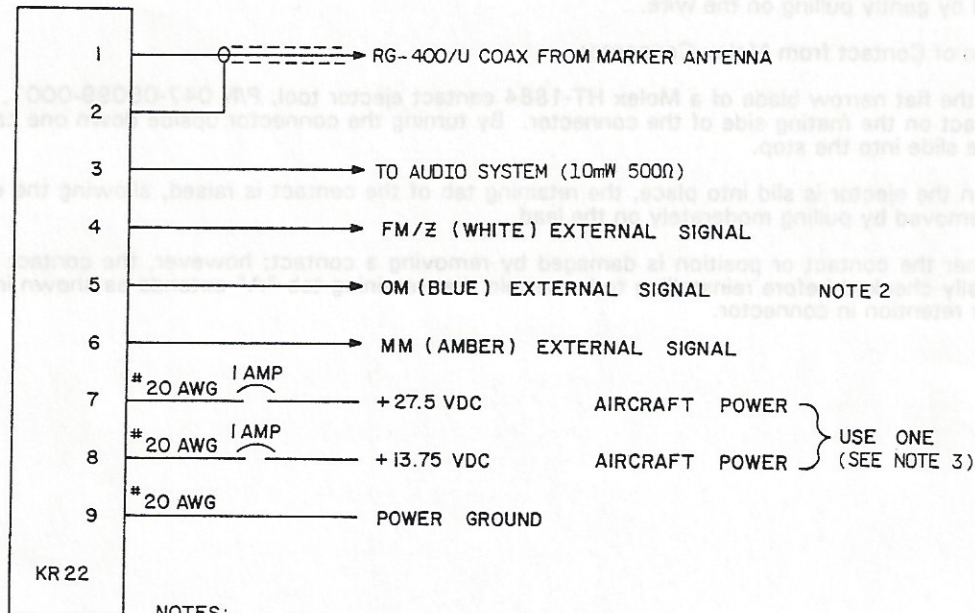


AlliedSignal General Aviation Avionics

BENDIX/KING KR 22 MARKER BEACON RECEIVER

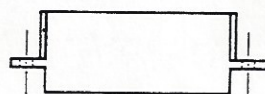
KR 22 INTERCONNECTIONS



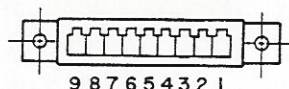
NOTES:

1. UNLESS NOTED USE 26 AWG MINIMUM
2. EXTERNAL MARKER LIGHTS MUST BE DRIVEN BY A BUFFER AMPLIFIER. THE KA285 (KFC 200) MARKER LIGHTS MEET THIS REQUIREMENT. TO USE, CONNECT KR22 PIN 4 TO KA285 PIN H, KR22 PIN 5 TO KA285 PIN J, AND KR22 PIN 6 TO KA285 PIN L.
3. FOR REMOTE MOUNTING, CONNECT A 1 AMP SPST SWITCH IN PLUS, SOURCE VOLTAGE LINE BETWEEN BREAKER AND UNIT.

KR22 CONNECTOR



TOP VIEW



REAR VIEW

NOTE:

1. USE MOLEX, HT-1921, OR HTR 6115 CRIMPING TOOL FOR THE CONTACTS AND MOLEX, HT-1884, EJECTOR TOOL.

Figure 2-1 INTERCONNECTION DRAWING
(DWG. NO. 155-01287-0000, R-2)